



PENINSULA

THREE

a development by



PENINSULA THREE

The Tower

Peninsula Three is designed in pure precision across architecture, interiors, craftsmanship and community that sets the scene for a vibrant and social waterfront lifestyle.

Residents are privileged with sweeping views of the iconic Burj Khalifa, Downtown Skyline, Dubai Canal and Arabian Gulf through glass-fronted façades, complemented with ample rays of beaming sunlight, illuminating the super slick living interiors.

APARTMENT TYPE	RANGING FROM
Studio	410 - 436 ft ²
One Bedroom	644 - 823 ft ²
Two Bedroom	931 - 1,061 ft ²

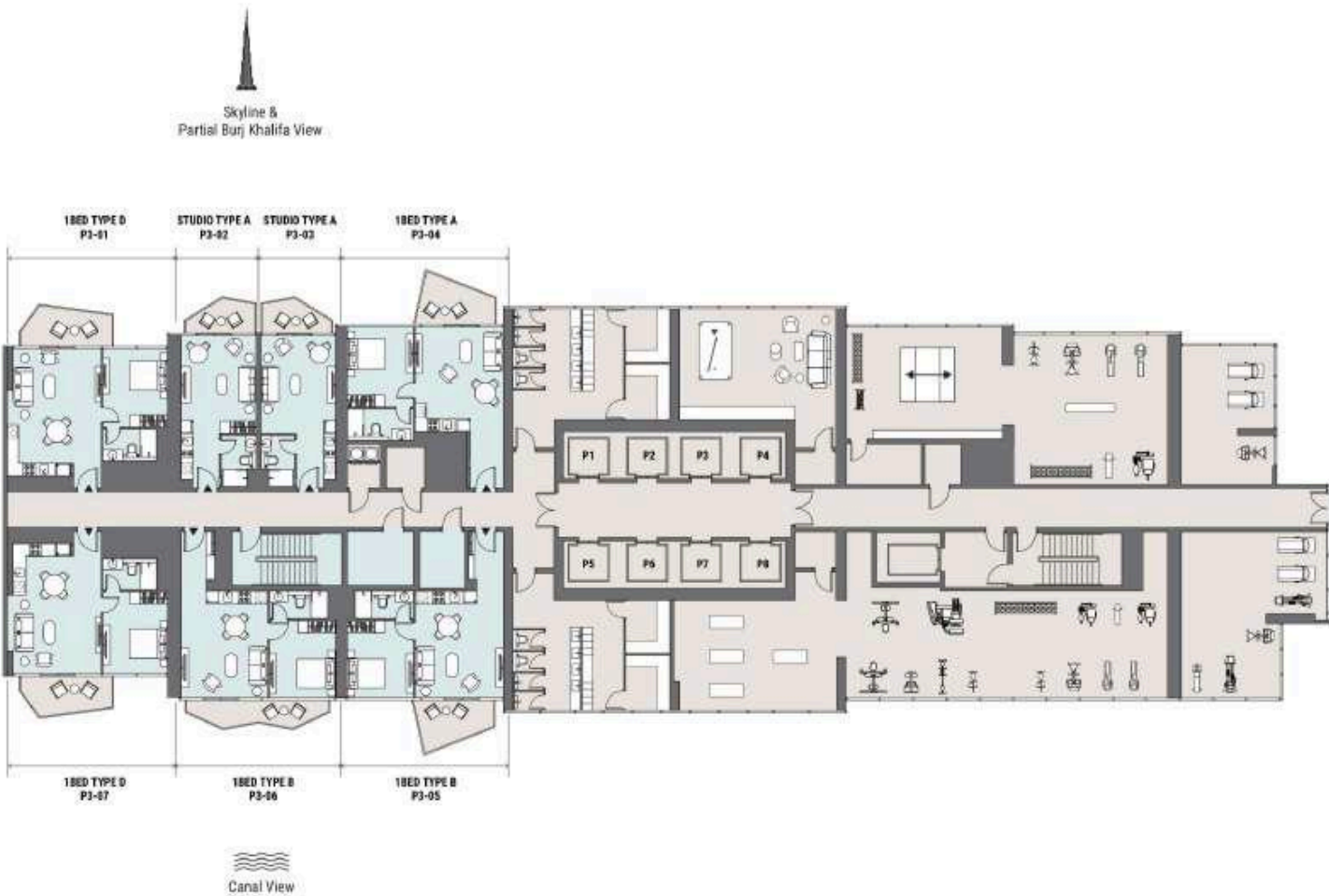


Peninsula
Three



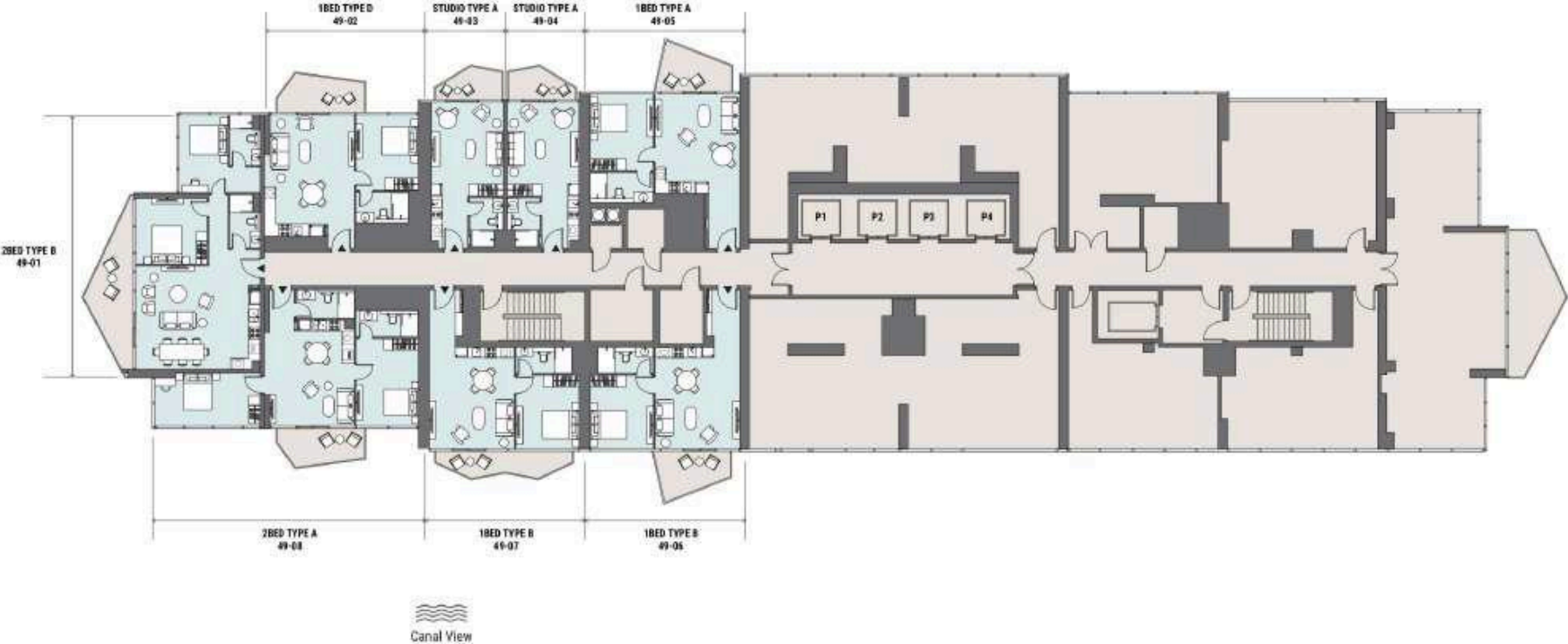


TOWER APARTMENTS
PODIUM LEVEL 03



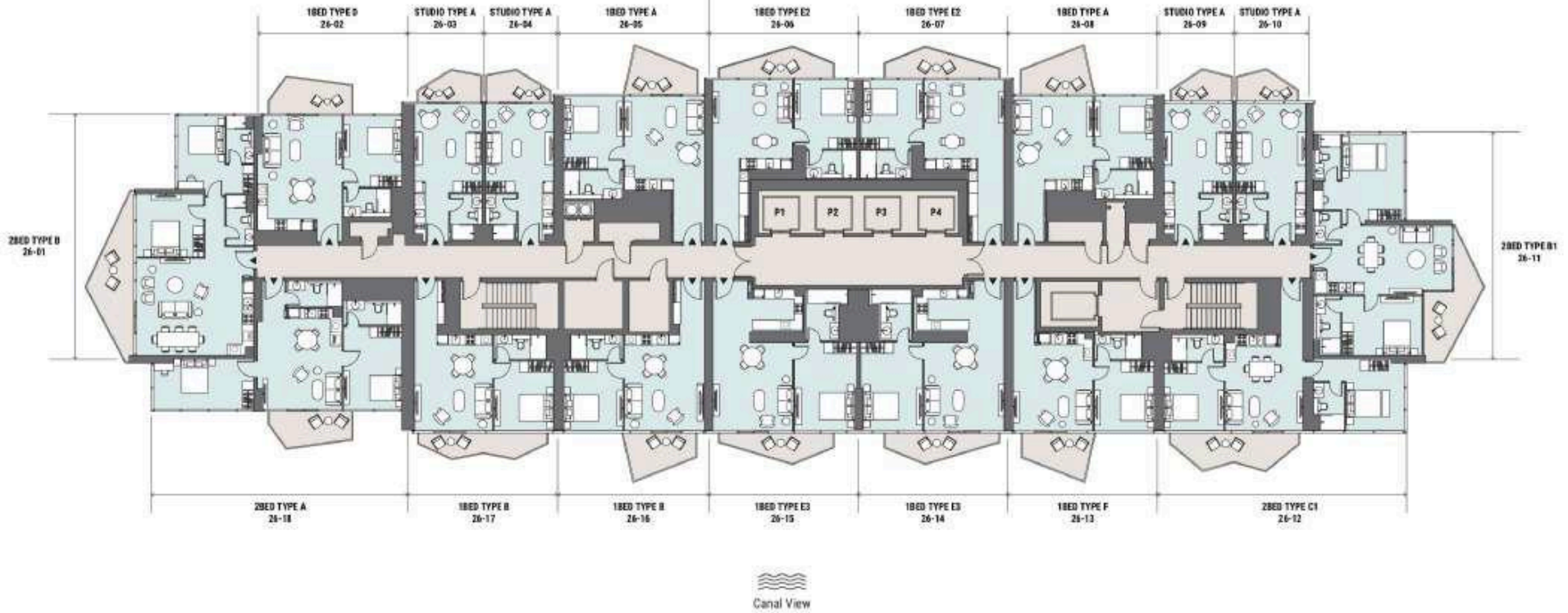
TOWER APARTMENTS

LEVEL 49



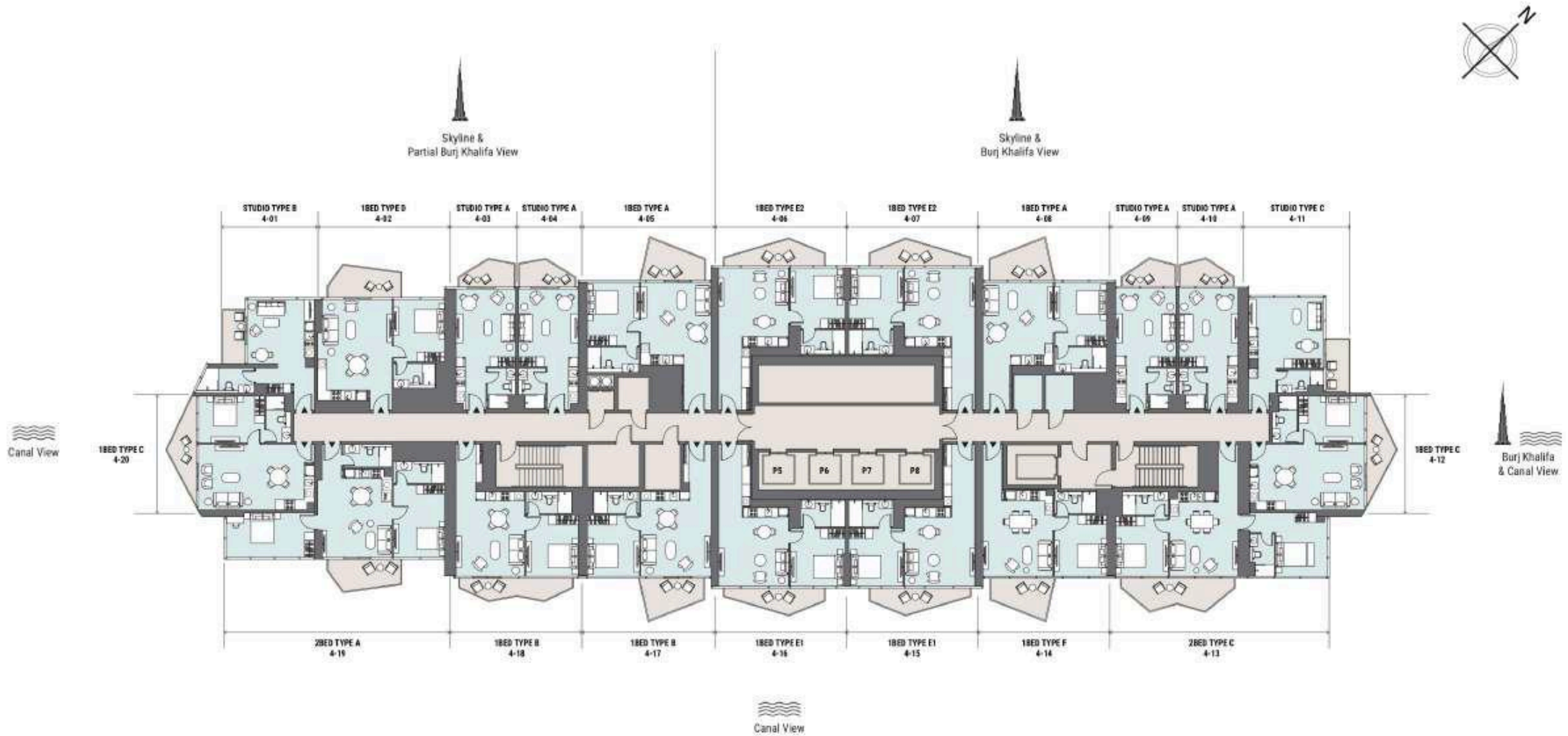
TOWER APARTMENTS

LEVEL 26-48



TOWER APARTMENTS

LEVEL 04-24



IT'S ALL IN THE DETAILS

TOWER / UNITS

📍 Total floors: 49

📍 Unit breakdown

- Studio: 222
- One Bed: 491
- Two Bed: 136

📍 Layouts available per unit

- Studio: 3 unit types
- One Bed: 8 unit types
- Two Bed: 5 unit types

📍 Available views:

- Skyline view
- Canal view
- Partial Burj Khalifa view
- Burj Khalifa view

📍 Height of ceiling - Lobby area: 8-9m

📍 Height of ceiling - Units: 3m

📍 Height of windows - Units: 3m

📍 Number of elevators: 8

📍 Lobby area: Yes

📍 Drop off area: Yes

📍 Kitchen fittings/specs:

- Fridge/ Freezer
- Sink
- Gas or electrical oven: gas
- Space for dishwasher: provision for 2BD
- Space for Washing Machine/Dryer: provision for all units

📍 Finishing materials

- Kitchen: quartz countertops/laminate on kitchen shutters
- Bathrooms
- Finishings: porcelain tiles walls and floors / paint walls
- Tub and/or shower: showers

📍 Parking space per unit: 1

📍 Number of parking floors: one basement, ground floor, podium one and podium two

📍 Charging hubs for electric vehicles inparking: Yes

📍 Access to 50th viewing deck: Yes

- Accessible by elevator: Yes
- Greenery (pots): Yes

📍 Lobby facilities

- 24-hour security and reception
- Co-working space
- Lounge area

📍 District Cooling: Yes



PENINSULA TWO

The Heart of Dubai

Peninsula is situated in Business Bay, one of the most well-connected locations within the city of Dubai. Located in close proximity to Dubai's Old Town, Downtown, and The Marina, it offers residents unrestricted access to all of the city's most recognisable landmarks.

Peninsula can be accessed directly off Sheik Zayed Road, First Al Khail Street and Marasi Drive, it is within a short walking distance of the Business Bay Metro Station and is serviced by an array of bus routes and by the Dubai water taxi service.

LANDMARK	DISTANCE	DRIVE
The Dubai Mall/Burj Khalifa	2 km	7 min
Business Bay Metro Station	2 km	7 min
Dubai Opera	2 km	7 min
Dubai Design District	6 km	11 min
Meydan	10 km	12 min
DIFC	6 km	12 min
Dubai Healthcare City	11 km	14 min
Ras Al Khor Wildlife Sanctuary	9 km	15 min
Jumeirah Beach	9 km	15 min
Dubai International Airport	15 km	16 min
La Mer	12 km	18 min



