



PENINSULA

FOUR

THE PLAZA

a development by



PENINSULA FOUR

THE PLAZA

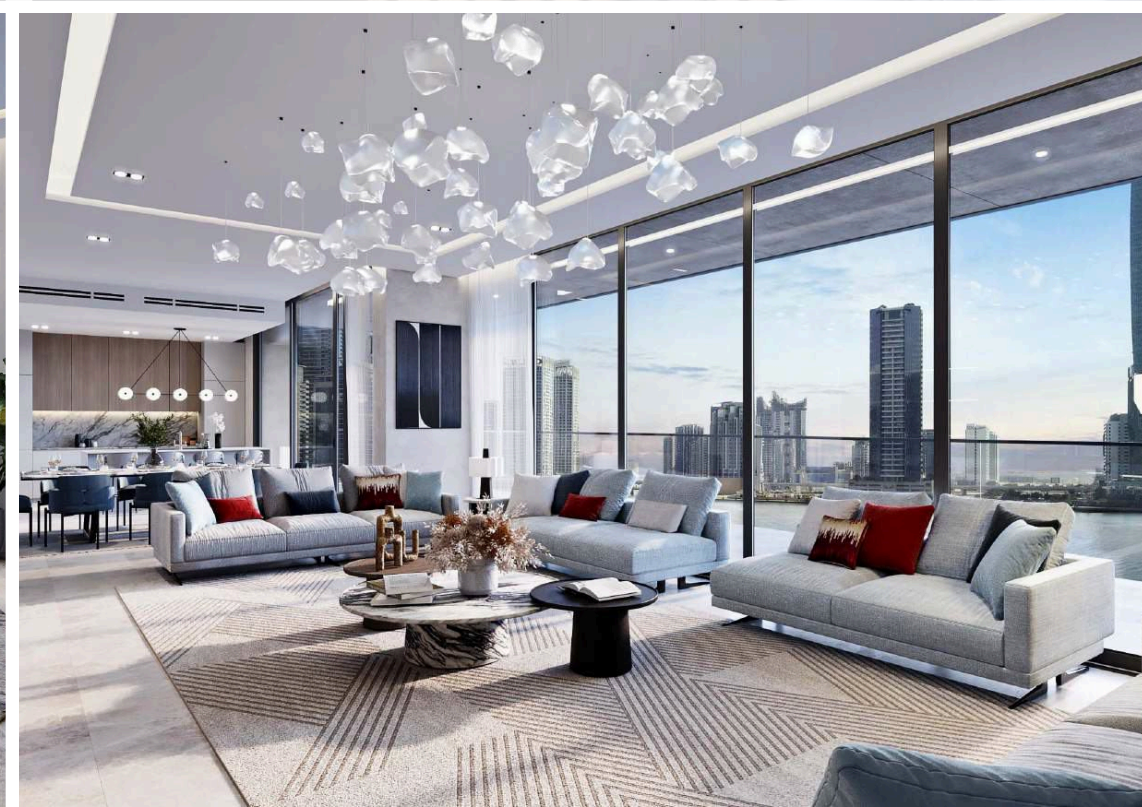
Featuring two 52-storey towers and a collection of 16 premium waterfront duplex lofts, Peninsula Four, The Plaza comprises an array of exquisitely finished studio, one, two, three and four-bedroom units.

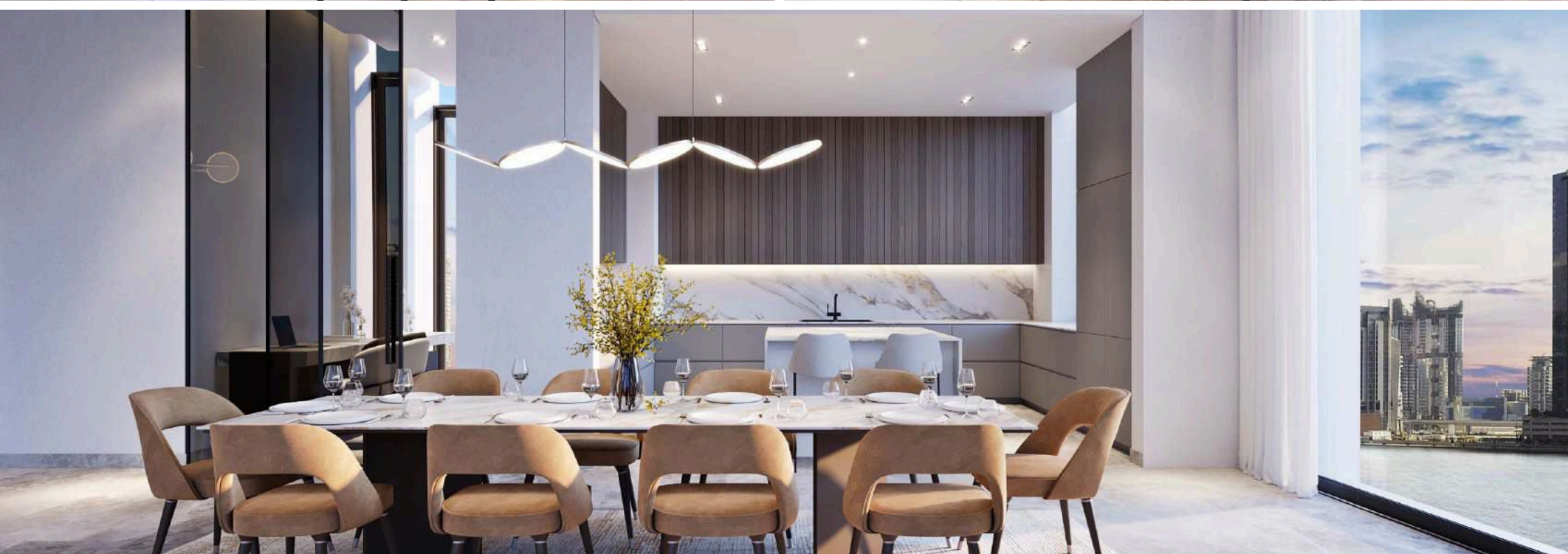
Each unit is tastefully designed to make optimum use of space and create flowing, open living spaces, enhanced by striking floor to ceiling windows that frame the spectacular views of Downtown Dubai landmarks such as the Burj Khalifa, the iconic Dubai skyline, as well as the glistening waters of the Dubai Canal.

APARTMENT TYPE	RANGING FROM
Studio	500 - 528 ft ²
One Bedroom	803 - 993 ft ²
Two Bedroom	1,436 - 1,453 ft ²
Three Bedroom	1,937 - 1,948 ft ²
Four Bedroom	2,592 - 2,689 ft ²
Four Bedroom + Maid	5,439 - 5,439 ft ²

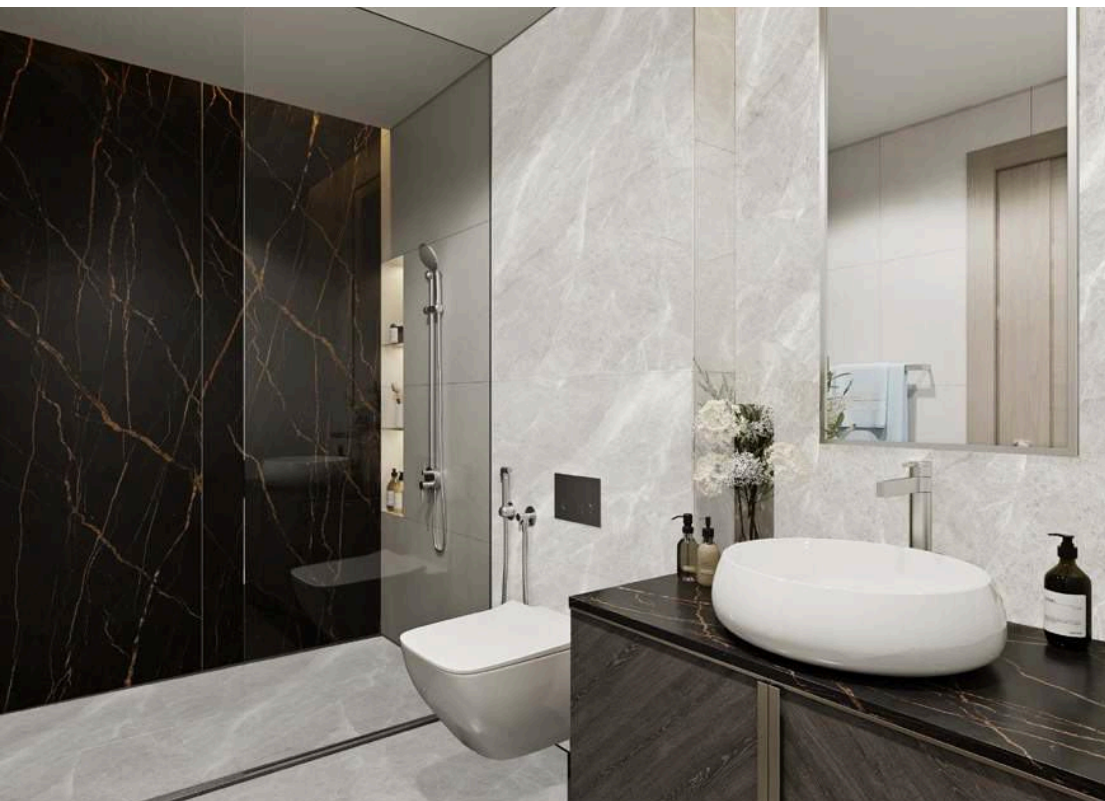


Peninsula
Four









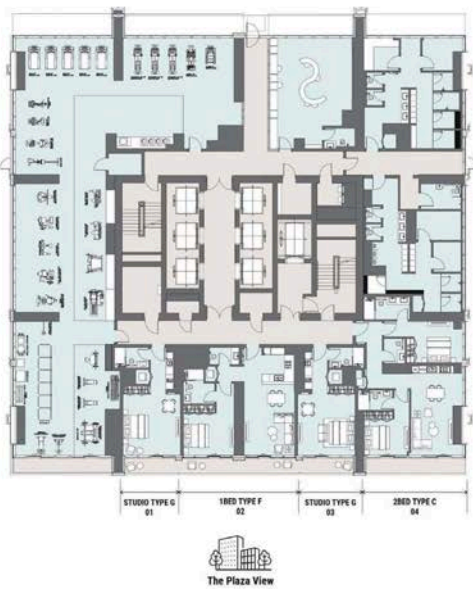


Towers
Ground Level

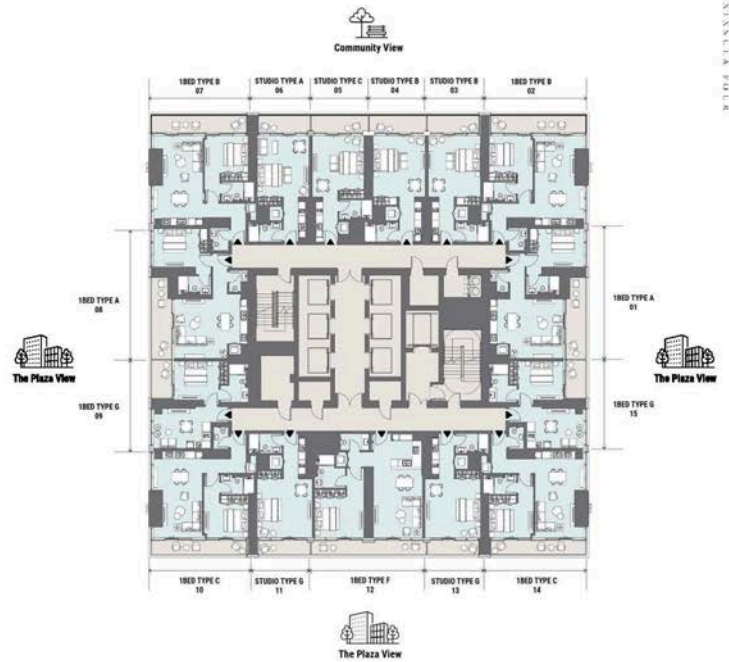


Towers
Podium Level 2

Drawings are provided by our consultants. All dimensions, features and amenities are approximate at time of printing. Actual size may vary from stated area. Drawings not to scale E & OE. The developer reserves the right to make revisions to the floor plans and any features, materials and dimensions mentioned without further notice.



Towers
Podium Level 3



Towers
Levels 4-5

Drawings are provided by our consultants. All dimensions, features and amenities are approximate at time of printing. Actual size may vary from stated area. Drawings not to scale E & OE. The developer reserves the right to make revisions to the floor plans and any features, materials and dimensions mentioned without further notice.



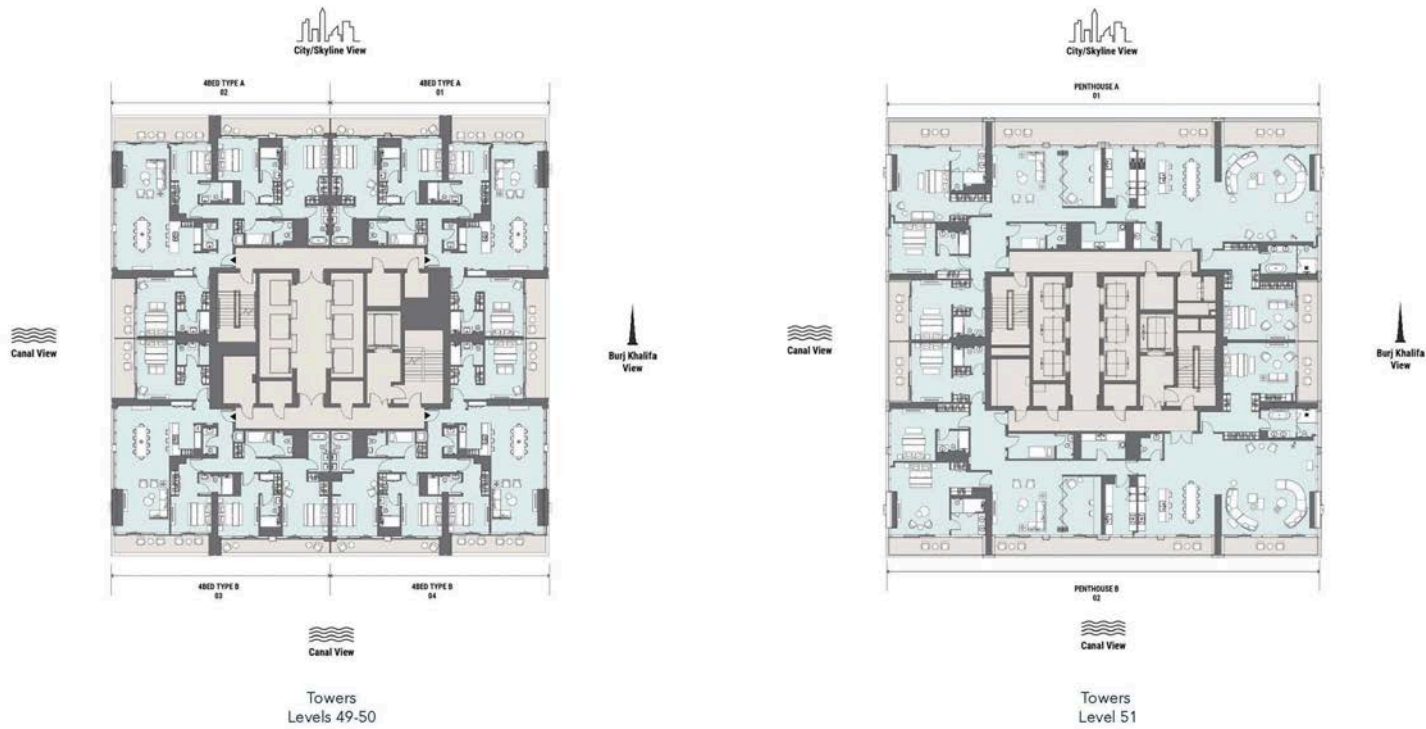
Drawings are provided by our consultants. All dimensions, features and amenities are approximate at time of printing. Actual size may vary from stated area. Drawings not to scale E & OE. The developer reserves the right to make revisions to the floor plans and any features, materials and dimensions mentioned without further notice.

50



Drawings are provided by our consultants. All dimensions, features and amenities are approximate at time of printing. Actual size may vary from stated area. Drawings not to scale E & OE. The developer reserves the right to make revisions to the floor plans and any features, materials and dimensions mentioned without further notice.

33

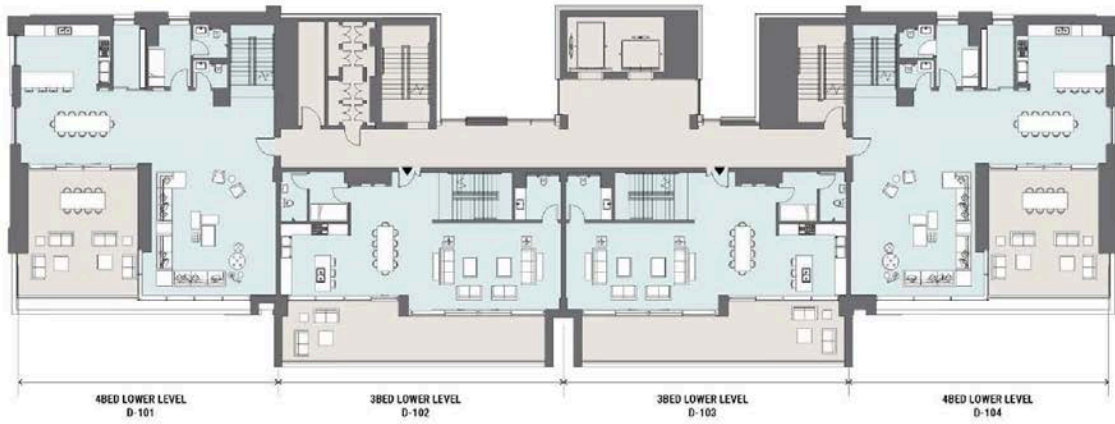


Drawings are provided by our consultants. All dimensions, features and amenities are approximate at time of printing. Actual size may vary from stated area. Drawings not to scale E & OE. The developer reserves the right to make revisions to the floor plans and any features, materials and dimensions mentioned without further notice.



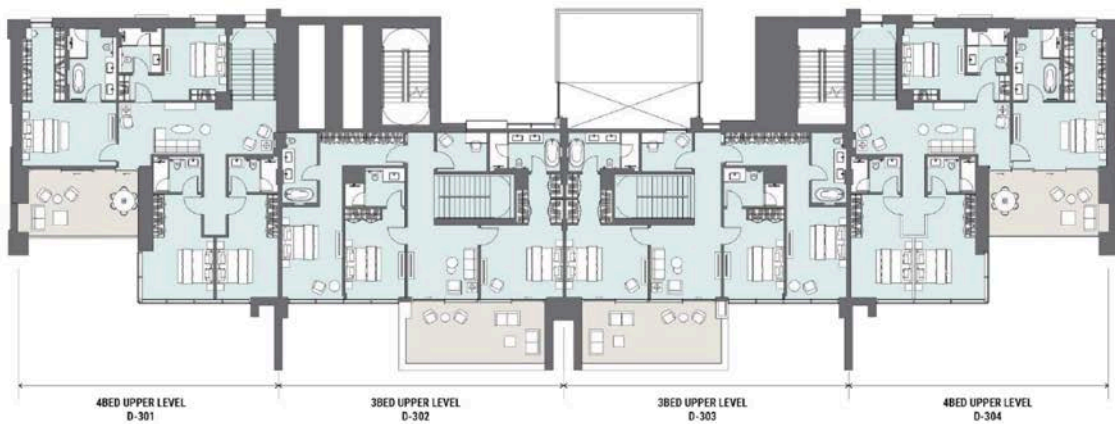
Premium Waterfront Lofts
Ground Level

Drawings are provided by our consultants. All dimensions, features and amenities are approximate at time of printing. Actual size may vary from stated area. Drawings not to scale E & OE. The developer reserves the right to make revisions to the floor plans and any features, materials and dimensions mentioned without further notice.



Premium Waterfront Lofts
Level 01 and 03

Drawings are provided by our consultants. All dimensions, features and amenities are approximate at time of printing. Actual size may vary from stated area. Drawings not to scale E & OE. The developer reserves the right to make revisions to the floor plans and any features, materials and dimensions mentioned without further notice.



Premium Waterfront Lofts
Level 02 and 04

Drawings are provided by our consultants. All dimensions, features and amenities are approximate at time of printing. Actual size may vary from stated area. Drawings not to scale E & OE. The developer reserves the right to make revisions to the floor plans and any features, materials and dimensions mentioned without further notice.

IT'S ALL IN THE DETAILS

TOWERS / LOFTS

📍 Towers

Total Floors: 52

Unit Breakdown

- Studio: 302
- One Bed: 473
- Two Bed: 132
- Three Bed: 82
- Four Bed: 16
- Four Bed Penthouse: 4

📍 The Lofts

Total Floors: 4

Unit Breakdown

- Three Bed Duplex: 8
- Four Bed Duplex: 8

📍 Layouts Available Per Unit

Towers

- Studio: 6 Unit Types
- One Bed: 7 Unit Types
- Two Bed: 3 Unit Types
- Three Bed: 1 Unit Type
- Four Bed: 2 Unit Types
- Four Bed Penthouse: 2 Unit Types

The Lofts

- Three Bed Duplex: 1 Unit Type
- Four Bed Duplex: 1 Unit Type

📍 Available Views:

- The Plaza/Community (Tower Only)
- City/Skyline View (Tower Only)
- Canal View
- Burj Khalifa View (Tower Only)

📍 Height of Lobby Ceiling - Towers: 5.3m; The Lofts: 4.5m

📍 Height of Unit Ceiling - Towers: 2.4m-3m; The Lofts: 3.25m

📍 Number of Elevators: 7 (Tower Only)

📍 Lobby Area: Yes

📍 Drop Off Area: Yes (Tower Only)

📍 Kitchen Fittings/Specs:

- Fridge/ Freezer
- Stainless Steel Sinks
- Oven (Gas)
- Hob Extract Hood
- Provision for Dishwasher (One, Two & Three Bed Units)
- Dishwasher (Four Bed Penthouse & The Lofts)
- Provision for Washing Machine (One, Two & Three Bed Units)
- Washing Machine (Four Bed Penthouse & The Lofts)

📍 Parking Space Per Unit

Towers

- Studio: 1
- One Bed: 1
- Two Bed: 1
- Three Bed: 2
- Four Bed: 2
- Four Bed Penthouse: 4

The Lofts

- Three Bed Duplex: 3
- Four Bed Duplex: 3

📍 Lobby Facilities

- 24-hour Security and Reception (Tower Only)
- Co-working Space (Tower Only)
- Lounge Area

📍 District Cooling: Yes



PENINSULA TWO

The Heart of Dubai

Peninsula is situated in Business Bay, one of the most well-connected locations within the city of Dubai. Located in close proximity to Dubai's Old Town, Downtown, and The Marina, it offers residents unrestricted access to all of the city's most recognisable landmarks.

Peninsula can be accessed directly off Sheik Zayed Road, First Al Khail Street and Marasi Drive, it is within a short walking distance of the Business Bay Metro Station and is serviced by an array of bus routes and by the Dubai water taxi service.

LANDMARK	DISTANCE	DRIVE
The Dubai Mall/Burj Khalifa	2 km	7 min
Business Bay Metro Station	2 km	7 min
Dubai Opera	2 km	7 min
Dubai Design District	6 km	11 min
Meydan	10 km	12 min
DIFC	6 km	12 min
Dubai Healthcare City	11 km	14 min
Ras Al Khor Wildlife Sanctuary	9 km	15 min
Jumeirah Beach	9 km	15 min
Dubai International Airport	15 km	16 min
La Mer	12 km	18 min



